



# TECHNICAL SPECIFICATION

- ◇ PA SPECIFICATION
- ◇ LIGHTING PLAN
- ◇ LIGHTING SPECIFICATION
- ◇ PROJECTOR SPECIFICATION
- ◇ STAGE & MAIN HALL DIMENSIONS
- ◇ THEATRE SEATING PLAN
- ◇ CABARET SEATING PLAN
- ◇ GLASS STUDIO DIMENSIONS
- ◇ CAFÉ BAR & CRYPT



# PA SPECIFICATION - MAIN HALL

## INTERNAL PA

The following system will be provided for events where agreed. St George's will provide a House Manager to operate the playback and volume levels, although for more professional or nuanced delivery we recommend hiring a Sound Engineer. Please speak with the Events Department in advance for costs and advice.

### Mixer:

Soundcraft UI mixer

### Microphones:

#### Radio Mics (Maximum of 4 channels)

4 x Handheld Sennheiser Radio mics

3 x DPA Headset Mics with Sennheiser SK300 bodypacks

#### Wired Mics

2 x SM58 mics

4 x Gooseneck Audio-Technica AT8666 mics

### Speakers:

6 x Audac Axir Column speakers along columns on Auditorium level

8 x Audac Axir Column speakers along walls on Gallery level

2 x EV ZX1i Wall Speakers along rear of Gallery level

### Playback options:

- ◇ Aux input directly into Mixer from Lighting Cupboard (FOH)
- ◇ HDMI playback from Fixed Screen & Projector: from back of stage wall, from ceiling under Central Gallery next to projector (FOH), and from Lighting Cupboard (FOH)
- ◇ Aux input from back of stage wall
- ◇ Aux input from ceiling under Central Gallery next to projector (FOH)

Please note the Internal PA is intended to amplify speech and is not recommended for singing. If your event is spoken word and you intend to have more than 4 speakers we recommend the Standard Spec PA to be better suited to your needs





STANDARD SPEC PA (Provided by King Sound Reinforcement)

The following system with technical staff will be provided for events where agreed.

**It represents the maximum amplification required at St George's Bristol owing to the responsive acoustic of the auditorium and based on years of experience. Use of more powerful equipment is highly discouraged.**

Items marked (UO) can be requested but additional costs will be incurred and charged against the final payment.

### Front Of House (FOH):

#### Mixing Desk Options

- ◇ Midas M32 32 input Digital C/W Midas DL32 AES50 stage box
- ◇ Midas Pro 2 Digital C/W Midas DL251 AES50 stage box **(UO) £125.00**
- ◇ Digico SD12 Digital console C/W Digico D2 48 input stage box **£190.00**

#### Speakers

- ◇ 4X BMS Coda R32 (12", 2" 1") stalls
- ◇ 2X BMS Coda SW 215 subs (2X15") stalls
- ◇ 2X Nova EX600 line source, balcony fills
- ◇ 40/10 Multicore 40m with monitor splits **(UO) £40**
- ◇ Lab Gruppen IPD 2400 amplifiers (3 way active system)
- ◇ Larger FOH options are available but generally discouraged at St Georges.

Please note these speakers are located in stacks on stage in the far downstage corners and will restrict some audience views

### On Stage

#### Microphones (Stands as required)

- ◇ 58 ATM25 M88
- ◇ 57 C451B
- ◇ Beta 57a E604
- ◇ E904 201 CM3
- ◇ Beta 58 AT2031 421
- ◇ Beta 87a MC380 C2000B
- ◇ Beta 91a E609 E606
- ◇ Beta52 ATM63 MCE 530
- ◇ C214 E935 C414
- ◇ KM184 E945
- ◇ Sennheiser G 3 EW300 hand held/ head worn radio mics **(UO) £30**
- ◇ DPA 4099 **(extra cost)**
- ◇ DPA 2011C **(extra cost)**



### DI's

20 Active DIs (BSS/KT) available

### Monitoring

- ◇ 6 X Nexo MW1/3 wedge monitors (other options are available extra cost)
- ◇ Sennheiser EW 300 IEM (**£30 per channel**)

### On Stage Monitor Mix (UO) £POA

- ◇ Midas M32 Console (or other console to suit riders)
  - ◇ Passive stage splits
  - ◇ Monitor engineer
  - ◇ Extra Wedge Monitors/amps as required up to 12 total.
-

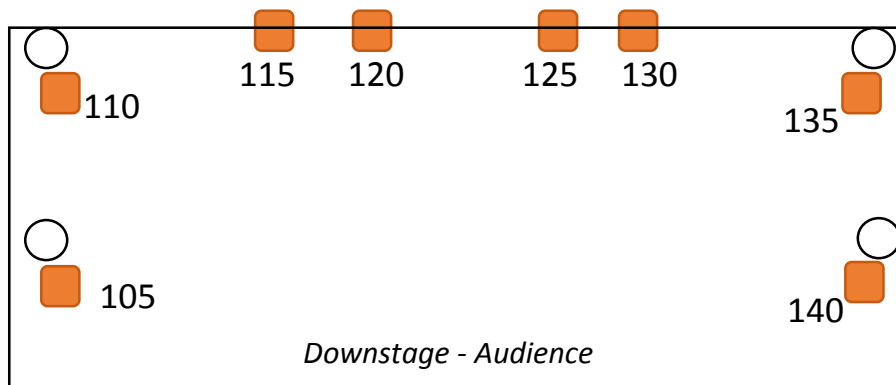


# LIGHTING PLAN – MAIN HALL

OVER THE STAGE:

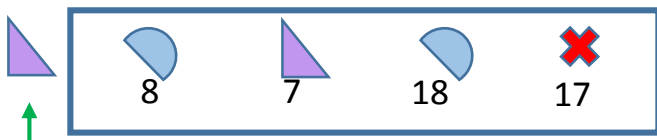
357	348	339	330	321	312
303	294	285	276	267	258
249	240	231	222	213	204
195	186	177	168	159	150

ON STAGE: on Reredos & 4 stage columns unless otherwise requested

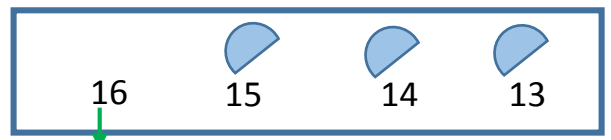


FRONT OF HOUSE:

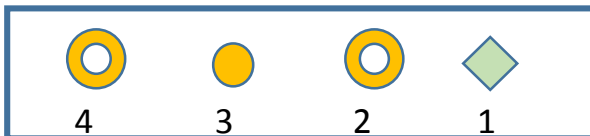
Front Left Hatch



Front Right Hatch



Rear Left Hatch



Rear Right Hatch



KEY:

	ELAR 108 Par RGBW LED		Selecon Acclaim Fresnel 500/600W
	Elumen8 ELUM 114 RGBWAUV Hex Par Can		Par 64
	ETC source 4 Zoom 15/30 Profile		No power (out of action)
	ETC source 4 Zoom 25/50 Profile	<b>1</b>	DMX Address
	Selecon Pacific Zoom 12/28 600W		



## LIGHTING SPECIFICATION – MAIN HALL

The standard specification is shown below. St George's Duty Event Manager will set up 1 x show LX state for you, and the House Manager will operate the switch between this and the House Lights.

### Lanterns:

All lanterns are in fixed positions

### Over stage

24 x Elumen8 ELUM 114 RGBWAUV Hex Par Can

### On stage

8 x ELAR 108 Par RGBW LED

### Front of House

4 x ETC source 4 Zoom 15/30 Profile

4 x Selecon Pacific Zoom 12/28 600W

2 x ETC source 4 Zoom 25/50 Profile

2 x Selecon Acclaim Fresnel 500/600W

2 x Par 64

### Control:

1 x Nicolaude STICK-DE3

St George's currently does not have a lighting desk, which means changing lights after the scenes (usually during Sound Check) is not possible. For a more creative and flexible lighting design, we recommend hiring a Lighting Desk and Engineer. Please contact the St George's Events Department for further details





# PROJECTOR SPECIFICATION

FIXED SCREEN & PROJECTOR: Main Hall only

## Screen Specifications:

Screen Model	Screen International Major Pro C
Screen Dimensions	700cm x 525cm
Format	4:3
Finish	Matt white surface with no black borders

## Projector Specifications:

ITEM	DESCRIPTION
Model	Christie D12WU-H 1DLP
Image brightness	12,375 lumens (compliant with ISO 21118 std) 12,000 centre lumens 11,000 ANSI lumens
Contrast	5000:1 (Dynamic Aperture Enabled) 1200:1 Full On/Off 250:1 ANSI
Colour Wheel	6-segment (RGBCYW)
Display Type	1-chip 0.96" DMD
Native Resolution	1920 x 1200 WUXGA (2,304,000 pixels) 16:10
Lamp Type	2 x 465W (003-005237-XX)
Input - Standard	HDMI x 3 (One on back wall of stage, one on ceiling next to projector, one in lighting cupboard) VGA x 2 (One on back wall of stage, one on ceiling next to projector) 3GSDI x 1 (BNC) DVI-D x 1 (Digital only) Display Port x 1 HD15 x 1 RGBHV/Component (5 BNC) Composite Video x 1 (BNC) S-Video x 1 (mini DIN) Component Video (RCA) USB x 1 (Type B mini) - Display over USB USB x 1 (type A) - Image Viewer or WiFi Dongle (optional) HDBaseT (RJ45 x 1) RJ45 x 1 (Christie Presenter over wired network connection)



## LARGE FREE STANDING SCREEN & PROJECTOR – Rear Projection

### Screen Specifications:

Screen Model	Da-Lite Fast Fold Deluxe
Screen Dimensions	304cm x 213cm
Format	4:3
Finish	Light grey matt surface with black borders

### Projector Specifications:

ITEM	DESCRIPTION
Model	Sanyo PDG-DXTIOL XGA (1024 x 768) DLP Projector - 5200 ANSI lumens
Projection system	Single DLP chip, 4 segment color wheel
Resolution	1024 x 768 pixels* (up to UXGA @ 60 Hz, up to SXGA+ @ 60 Hz on DVI-D)
Lamp	260 W AC (230 W in Eco mode), Dual lamp system
Lens shift	Vertical + 0.5V, Horizontal +/- 0.1H (LNS-W40, LNS-S40, LNS-T40, LNS-T41)
Inputs	1 Analog RGB (Mini D-Sub 15P) 1 Analog RGB R/Cr, G/Y, B/Cb, H, V (BNC x 5), 1 Digital RGB (DVI-D 24P), 1 Component Y, Cb/Pb, Cr/Pr (RCA x 3), 1 Component (Mini D-Sub 15P) shared with COMPUTER 1 IN, 1 S-Video (Mini DIN 4P), 1 Video, 3 Stereo Mini Audio, 2 (L/R) RCA Audio, 1 Remote Control (Stereo Mini)
Outputs	1 RGB (Mini D-Sub 15P), 1 Stereo Mini Audio, 1 Screen Trigger
Video Compatibility	NTSC, NTSC4.43, PAL, PAL-60/N/M/B/G/H/I), SECAM, HDTV: 1080i, 720p, SDTV: 576p, 576i, 480p, 480i
Horizontal Resolution	NTSC / NTSC4.43 / PAL / PAL-M / PAL-N / PAL60: 540 TV lines SECAM: 300 TV lines RGB: 1024 dots (H) x 768 dots (V)





## SMALL FREE STANDING SCREEN & PROJECTOR

### Screen Specifications:

Screen Dimensions	198cm x 149cm
Format	4:3
Finish	White matt surface with black borders on top and bottom

### Projector Specifications:

ITEM	DESCRIPTION
Model Number	RICOH PJ X2240
Projection System	Single Chip DLP
Resolution	1024 x 768
Panel	0.55in
Brightness	3000 lumens
Native Aspect Ratio	4x3
Native Contrast Ratio	2200:1
Throw Ratio	1.95 - 2.15
Input Signals	NTSC, PAL, SECAM, NTSC4.43, PAL-M, PAL-60
Connection Terminal	Mini D-SUB15pin x 1 (Computer 1 IN), Mini DIN 4pin x 1, RCA_1pin x 1, D-SUB 9pin x 1 (RS-232C), USBTYPE-minB x 1, HDMI(1.4) x 1

ITEM	DESCRIPTION
Model Number	InFocus T104
Projection System	DLP
Resolution	1024 x 768
Brightness	2200/2700 lumens
Native Aspect Ratio	4x3
Throw Ratio	2.04~1.85
Connection Terminal	VGA, S-Video, Composite





## STAGE & MAIN HALL DIMENSIONS

Main Hall: 17m x 25m

Stage: 10.2m x 7m

With Stage Extension:

10.2m x 9m

Choir Risers: 0.42 m Height

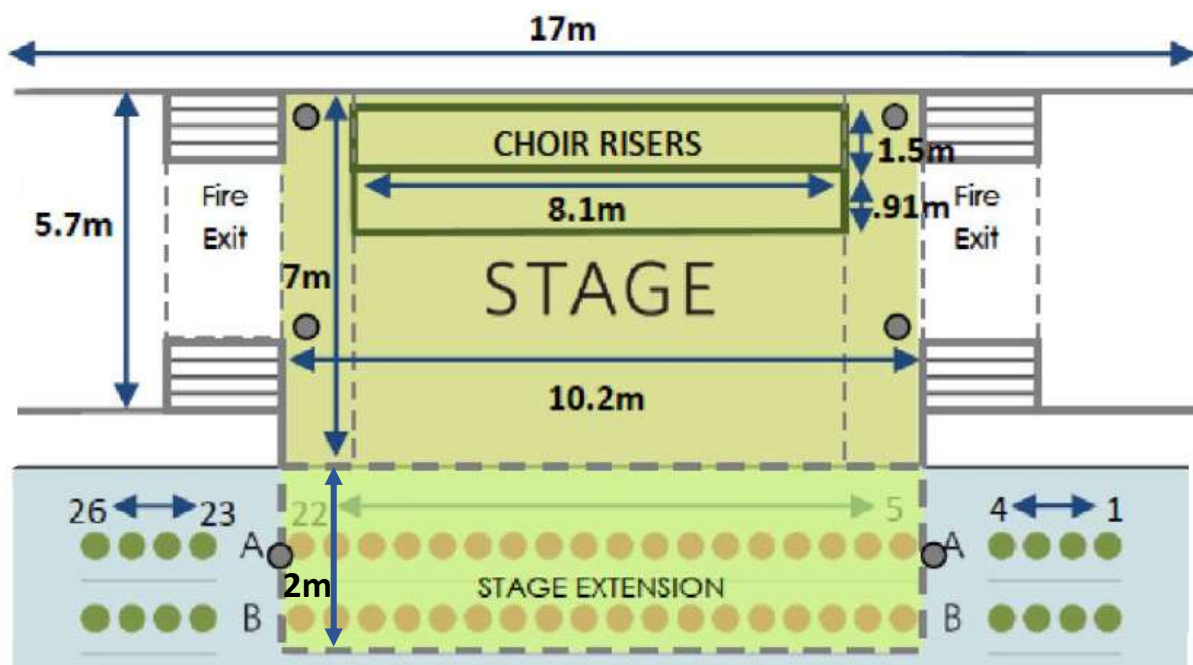
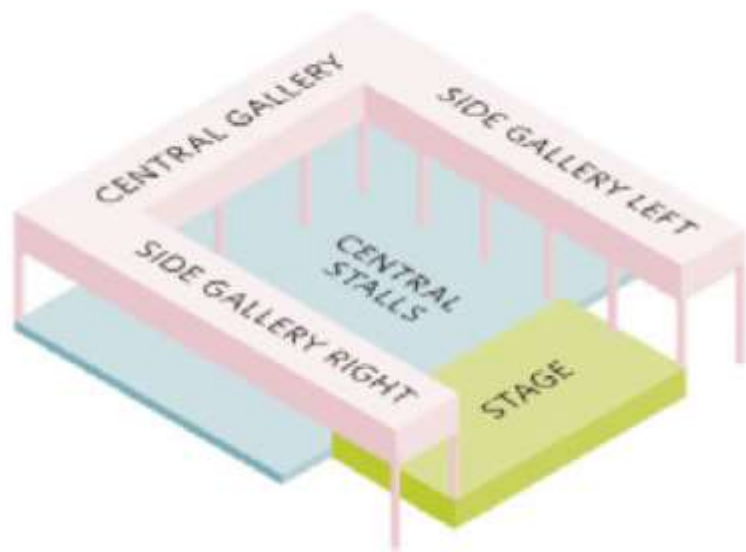
Back Riser: 8.1m x 1.5m

Front Riser: 8.1m x 0.91m

Seating Capacity: 576

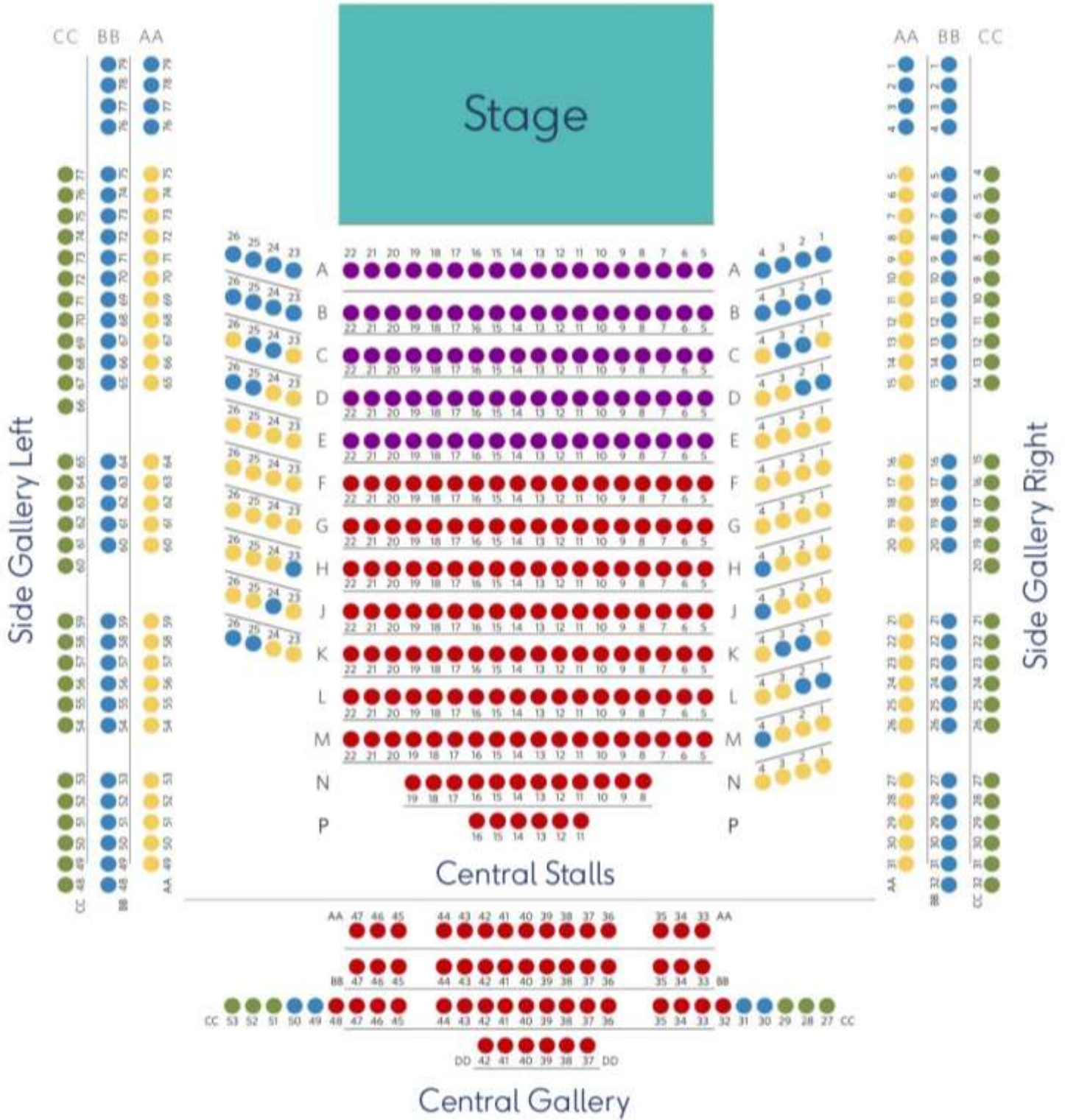
Stalls – 326

Gallery - 244





# THEATRE SEATING PLAN



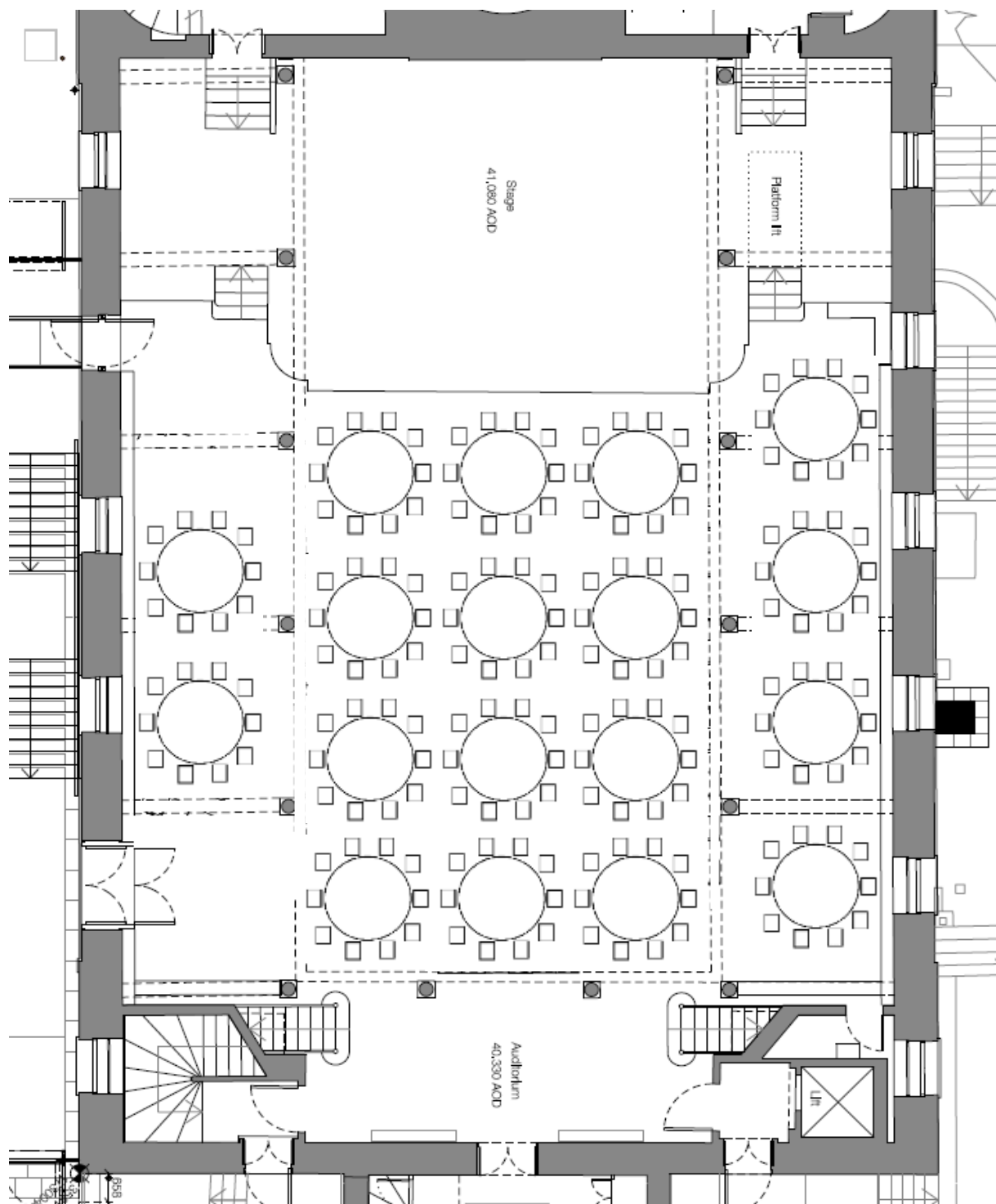


# CABARET SEATING PLAN

Capacity: 180 seated

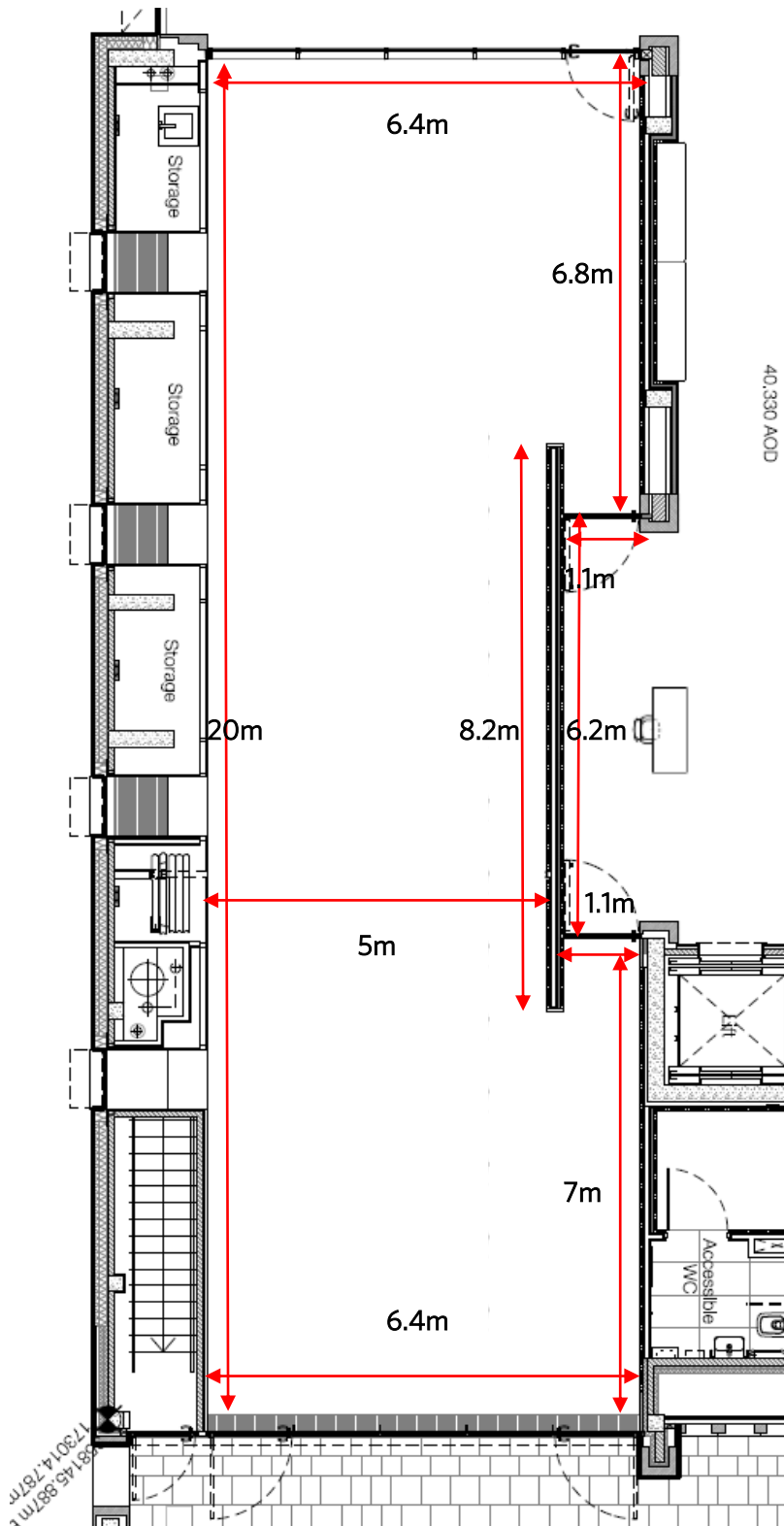
Tables: 18 x 6' Round

Chairs: 10 x Auditorium chairs max. per table





# GLASS STUDIO DIMENSIONS



## Cabaret Style

- Fits 9 x 6ft Rounds (12 chairs around each)
- 108 x seated capacity

## Conference Style

- Fits 9 x 6ft Rounds (10 chairs around each)
- 90 x seated capacity (facing the front/ South)

## Standing

- Up to 200 standing capacity

## Theatre Style (Flexible Space 1)

- 134 x seated capacity

## Theatre Style (Space 2 & 3)

- Flexible Space 2 = 78 x seated
- Flexible Space 3 = 48 x seated



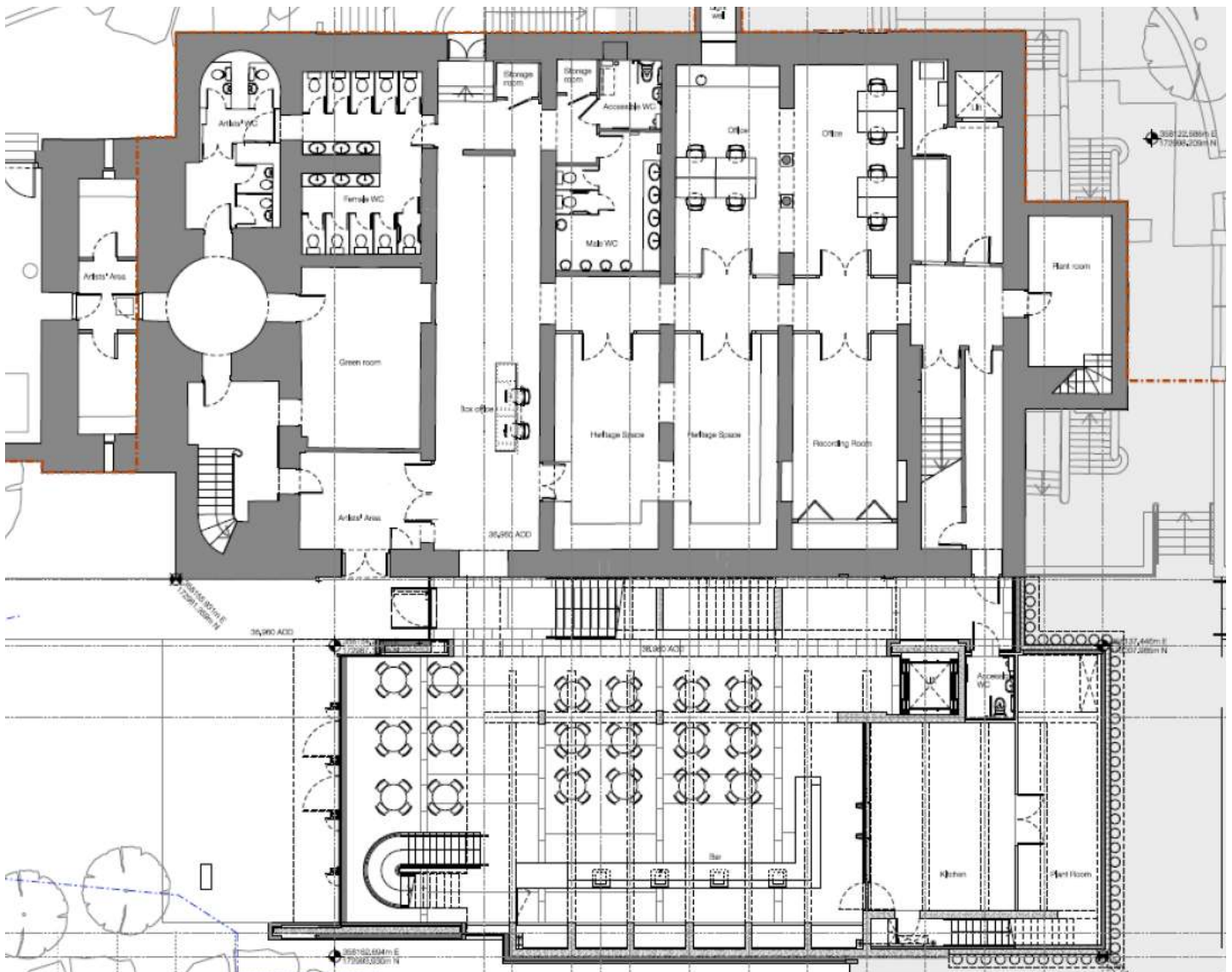
# CAFÉ BAR & CRYPT

## CRYPT:

- Box Office
- Toilets (Ladies, Gents & Accessible)
- Heritage Interpretation Centre
- Recording Suite
- Artist Dressing Rooms & Green Rooms
- Main Office

## CAFÉ BAR:

- Café Area
- Bar Area
- Kitchen
- Accessible Toilet
- Access to Gardens



The Heritage Centre, Café Bar, and Box Office are open to the public daily